



PVC SCREEN, CASING & ACCESSORIES

MINERAL EXPLORATION
ENVIRONMENTAL
GEOTECHNICAL
GEOTHERMAL
ROTARY
SONIC
HDD



PVC SCREEN, CASING, FITTINGS & ACCESSORIES TABLE OF CONTENTS

PVC RISER, SCREEN & FITTINGS OVERVIEW 2

FLUSH THREAD PVC3-17

- Flush Thread PVC Drawings..... 4
- PVC Ordering Reference Guide 5
- 1/2" PVC Schedule 40 & 80 6
- 3/4" PVC Schedule 40 & 80 7
- 1" PVC Schedule 40 & 80 8
- 1 1/4" PVC Schedule 40 & 80 9
- 1 1/2" PVC Schedule 40 & 80 10
- 2" PVC Schedule 40 & 80 11
- 2" 1/2 PVC Schedule 40 & 80 12
- 3" PVC Schedule 40 & 80 13
- 4" PVC Schedule 40 & 80 14
- 5" PVC Schedule 40 & 80 15
- 6" PVC Schedule 40 & 80 16
- 8" PVC Schedule 40 & 80 17

ADAPTERS 18

SLIP CAPS AND PLUGS 19

U-PACK®, VEE-WIRE® & PREPACKED SCREEN20-22

PVC BELL & PLAIN END CASING 23

ACCESSORIES.....24-32

- Centralizers..... 25
- Kwik Zip®26-27
- Shale Traps 8
- Surge Blocks29-30
- Well Cleaning Brushes..... 31
- Cleaning Detergent 31
- Filter Socks 31
- Cutters 32
- Kwik Klamps™ 33
- PVC Casing Elevators 34

PVC PIPE SPECIFICATIONS..... 35



PVC SCREEN, CASING, FITTINGS & ACCESSORIES



Hole Products offers a full line of PVC well screens, risers, casings, drop pipe, fittings, and accessories, as a long lasting alternative to steel.

PVC offers a number of advantages over metal screens including custom design flexibility and durability. In addition, PVC is economical and lightweight, making it an ideal solution for a number of applications including:

- Water wells
- Monitoring wells
- Vapor extraction wells
- Groundwater extraction wells
- Air or oxygen sparging
- De-watering
- Heavy metals sampling
- Mining
- And more

Please contact your Hole Products representative for product recommendations, availability of additional PVC products, and assistance ordering custom PVC.

Products listed in the catalog are representative of the most common industry sizes and styles. Please contact your Hole Products representative for additional product offerings.

FLUSH THREAD PVC



Hole Products' offers flush thread screen, riser and fittings in a variety of diameters, lengths, screen openings, and thread types. All flush thread screens and risers are free of printing, cleaned, and bagged. Our flush thread PVC offering includes the following options:

- Well screens and risers from 1/2" to 18" diameter
- ASTM F-480 flush threads with 2, 4, or 8 threads per inch
- NPT or custom threads are available on request
- Schedule 40 and Schedule 80
- Custom schedules and SDR's are available on request
- Screen openings from 0.006" to 0.500", in multiple row patterns and spacing
- Standard lengths of 2 1/2', 5', and 10'
- Custom lengths to 20'
- O-ring pre-installed
- Box or bulk packages options are available

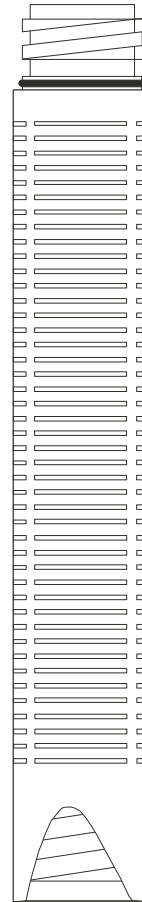
Please contact your Hole Products representative for availability of additional flush thread PVC.

FLUSH THREAD PVC DRAWINGS

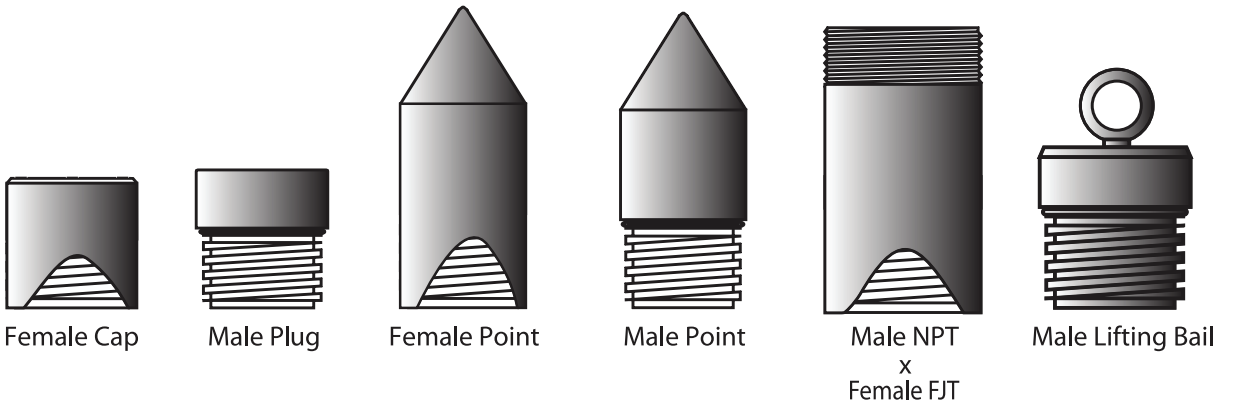
RISER/CASING



SCREEN



FITTINGS



PVC ORDERING REFERENCE GUIDE

Refer to the ordering guide below as a reference when ordering flush thread pvc.

Please contact your Hole Products representative for additional information and assistance ordering the PVC best suited for your specific needs.

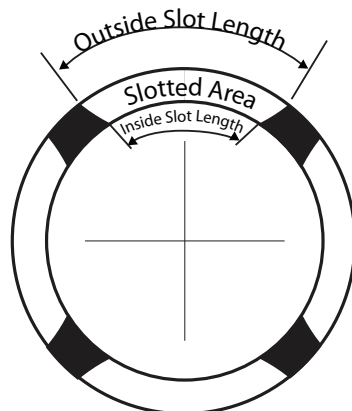
PVC RISER ORDERING REFERENCE GUIDE			
Schedule:		End Type:	
Diameter:		Thread Type:	
Length:		Threads Per Inch:	
Thread Type:			
Threads Per Inch:			
Additional Information:			

PVC SLOTTED SCREEN ORDERING REFERENCE GUIDE			
Schedule:		End Type:	
Diameter:		Thread Type:	
Length:		Threads Per Inch:	
Slot Size:		Plain or Belled End:	
Slot Spacing:			
# of Rows:			
Additional Information:			

TYPICAL SLOT WIDTHS*



* Slot widths shown are approximate - not to scale



Slots are 4 rows 90° apart

1/2" PVC SCHEDULE 40

1/2" SCHEDULE 40 RISER			
PART #	LENGTH	TPI*	PIECES PER BOX
5800210	2.5'	8	40
5800002	5'	8	40
5800001	10'	8	40

1/2" SCHEDULE 40 SCREEN				
PART #	SLOT SIZE	LENGTH	TPI*	PIECES PER BOX
5800215	.010	2.5'	8	40
5950067	.010	5'	8	40
5800220	.010	10'	8	40
5800225	.020	2.5'	8	40
5800003	.020	5'	8	40
5800230	.020	10'	8	40

1/2" CAPS, PLUGS & O-RINGS			
PART #	DESCRIPTION	TPI*	PIECES PER BOX
5650024	FLAT FEMALE CAP	8	25
5650155	FEMALE POINT	8	25
5650008	FLAT MALE PLUG	8	25
5650160	MALE POINT	8	25
5650165	O-RING	8	----

*ASTM F-480 Flush threads; additional threads are available.

1/2" PVC SCHEDULE 80

1/2" SCHEDULE 80 RISER			
PART #	LENGTH	TPI*	PIECES PER BOX
5800240	2.5'	8	40
5800080	5'	8	40
5800082	10'	8	40

1/2" SCHEDULE 80 SCREEN				
PART #	SLOT SIZE	LENGTH	TPI*	PIECES PER BOX
5951150	.010	2.5'	8	40
5951155	.010	5'	8	40
5951160	.010	10'	8	40
5951165	.020	2.5'	8	40
5951170	.020	5'	8	40
5951175	.020	10'	8	40

1/2" CAPS, PLUGS & O-RINGS			
PART #	DESCRIPTION	TPI*	PIECES PER BOX
5650115	FLAT FEMALE CAP	8	25
5650170	FEMALE POINT	8	25
5650175	FLAT MALE PLUG	8	25
5650180	MALE POINT	8	25
5650185	O-RING	8	----

*ASTM F-480 Flush threads; additional threads are available.

3/4" PVC SCHEDULE 40

3/4" SCHEDULE 40 RISER			
PART #	LENGTH	TPI*	PIECES PER BOX
5800245	2.5'	8	25
5801015	5'	8	25
5801001	10'	8	25

3/4" SCHEDULE 40 SCREEN				
PART #	SLOT SIZE	LENGTH	TPI*	PIECES PER BOX
5951180	.010	2.5'	8	25
5950025	.010	5'	8	25
5950060	.010	10'	8	25
5957185	.020	2.5'	8	25
5950074	.020	5'	8	25
5951190	.020	10'	8	25

3/4" CAPS, PLUGS & O-RINGS			
PART #	DESCRIPTION	TPI*	PIECES PER BOX
5650070	FLAT FEMALE CAP	8	25
5651028	FEMALE POINT	8	25
5650006	FLAT MALE PLUG	8	25
5650003	MALE POINT	8	25
5650190	O-RING	8	----

*ASTM F-480 Flush threads; additional threads are available.

3/4" PVC SCHEDULE 80

3/4" SCHEDULE 80 RISER			
PART #	LENGTH	TPI*	PIECES PER BOX
5800255	2.5'	8	25
5800015	5'	8	25
5800016	10'	8	25

3/4" SCHEDULE 80 SCREEN				
PART #	SLOT SIZE	LENGTH	TPI*	PIECES PER BOX
5951195	.010	2.5'	8	25
5950058	.010	5'	8	25
5951210	.010	10'	8	25
5951215	.020	2.5'	8	25
5951220	.020	5'	8	25
5951225	.020	10'	8	25

3/4" CAPS, PLUGS & O-RINGS			
PART #	DESCRIPTION	TPI*	PIECES PER BOX
5650072	FLAT FEMALE CAP	8	25
5650195	FEMALE POINT	8	25
5650007	FLAT MALE PLUG	8	25
5650200	MALE POINT	8	25
5650205	O-RING	8	----

*ASTM F-480 Flush threads; additional threads are available.

1" PVC SCHEDULE 40

1" SCHEDULE 40 RISER			
PART #	LENGTH	TPI*	PIECES PER BOX
5801005	2.5'	8	20
5800000	5'	8	20
5801025	10'	8	20

1" SCHEDULE 40 SCREEN				
PART #	SLOT SIZE	LENGTH	TPI*	PIECES PER BOX
5951230	.006	2.5'	8	20
5950003	.006	5'	8	20
5951235	.006	10'	8	20
5950998	.010	2.5'	8	20
5950000	.010	5'	8	20
5951020	.010	10'	8	20
5951240	.020	2.5'	8	20
5950001	.020	5'	8	20
5951021	.020	10'	8	20

1" CAPS, PLUGS & O-RINGS			
PART #	DESCRIPTION	TPI*	PIECES PER BOX
5650010	FLAT FEMALE CAP	8	25
5650012	FEMALE POINT	8	25
5650005	FLAT MALE PLUG	8	25
5650018	MALE POINT	8	25
5650210	O-RING	8	----

*ASTM F-480 Flush threads; additional threads are available.

1" PVC SCHEDULE 80

1" SCHEDULE 80 RISER			
PART #	LENGTH	TPI*	PIECES PER BOX
5800260	2.5'	8	20
5800265	5'	8	20
5801116	10'	8	20

1" SCHEDULE 80 SCREEN				
PART #	SLOT SIZE	LENGTH	TPI*	PIECES PER BOX
5950998	.010	2.5'	8	20
5951066	.010	5'	8	20
5951250	.010	10'	8	20
5951255	.020	2.5'	8	20
5951260	.020	5'	8	20
5951265	.020	10'	8	20

1" CAPS, PLUGS & O-RINGS			
PART #	DESCRIPTION	TPI*	PIECES PER BOX
5650019	FLAT FEMALE CAP	8	25
5651060	FEMALE POINT	8	25
5650215	FLAT MALE PLUG	8	25
5650220	MALE POINT	8	25
5650225	O-RING	8	----

*ASTM F-480 Flush threads; additional threads are available.

1 1/4" PVC SCHEDULE 40

1 1/4" SCHEDULE 40 RISER			
PART #	LENGTH	TPI*	PIECES PER BOX
5800270	2.5'	8	14
5800004	5'	8	14
5800039	10'	8	14

1 1/4" SCHEDULE 40 SCREEN				
PART #	SLOT SIZE	LENGTH	TPI*	PIECES PER BOX
5951270	.010	2.5'	8	14
5951013	.010	5'	8	14
5951009	.010	10'	8	14
5951275	.020	2.5'	8	14
5951280	.020	5'	8	14
5951285	.020	10'	8	14

1 1/4" CAPS, PLUGS & O-RINGS			
PART #	DESCRIPTION	TPI*	PIECES PER BOX
5650011	FLAT FEMALE CAP	8	25
5651029	FEMALE POINT	8	25
5651012	FLAT MALE PLUG	8	25
5650235	MALE POINT	8	25
5650240	HOISTING PLUG	8	-----
5650245	O-RING	8	----

*ASTM F-480 Flush threads; additional threads are available.

1 1/4" PVC SCHEDULE 80

1 1/4" SCHEDULE 80 RISER			
PART #	LENGTH	TPI*	PIECES PER BOX
5800275	2.5'	8	14
5800280	5'	8	14
5800026	10'	8	14

1 1/4" SCHEDULE 80 SCREEN				
PART #	SLOT SIZE	LENGTH	TPI*	PIECES PER BOX
5951290	.010	2.5'	8	14
5951295	.010	5'	8	14
5951300	.010	10'	8	14
5951305	.020	2.5'	8	14
5951310	.020	5'	8	14
5951315	.020	10'	8	14

1 1/4" CAPS, PLUGS & O-RINGS			
PART #	DESCRIPTION	TPI*	PIECES PER BOX
5650230	FLAT FEMALE CAP	8	25
5650250	FEMALE POINT	8	25
5650255	FLAT MALE PLUG	8	25
5650260	MALE POINT	8	25
5700023	HOISTING PLUG	8	-----
5650265	O-RING	8	----

*ASTM F-480 Flush threads; additional threads are available.

1 1/2" PVC SCHEDULE 40

1 1/2" SCHEDULE 40 RISER			
PART #	LENGTH	TPI*	PIECES PER BOX
5800310	2.5'	8	9
5801002	5'	8	9
5801000	10'	8	9

1 1/2" SCHEDULE 40 SCREEN				
PART #	SLOT SIZE	LENGTH	TPI*	PIECES PER BOX
5951320	.010	2.5'	8	9
5951001	.010	5'	8	9
5951000	.010	10'	8	9
5951325	.020	2.5'	8	9
5951330	.020	5'	8	9
5951335	.020	10'	8	9

1 1/2" CAPS, PLUGS & O-RINGS			
PART #	DESCRIPTION	TPI*	PIECES PER BOX
5650002	FLAT FEMALE CAP	8	25
5650021	FEMALE POINT	8	25
5650009	FLAT MALE PLUG	8	25
5650017	MALE POINT	8	
5650270	HOISTING PLUG	8	----
5650275	O-RING	8	----

*ASTM F-480 Flush threads; additional threads are available.

1 1/2" PVC SCHEDULE 80

1 1/2" SCHEDULE 80 RISER			
PART #	LENGTH	TPI*	PIECES PER BOX
5800315	2.5'	4	9
5800320	5'	4	9
5801004	10'	4	9

1 1/2" SCHEDULE 80 SCREEN				
PART #	SLOT SIZE	LENGTH	TPI*	PIECES PER BOX
5951006	.010	2.5'	4	9
5951007	.010	5'	4	9
5951340	.010	10'	4	9
5951345	.020	2.5'	4	9
5951350	.020	5'	4	9
5951355	.020	10'	4	9

1 1/2" CAPS, PLUGS & O-RINGS			
PART #	DESCRIPTION	TPI*	PIECES PER BOX
5650280	FLAT FEMALE CAP	4	25
5650285	FEMALE POINT	4	25
5651008	FLAT MALE PLUG	4	25
5650290	MALE POINT	4	25
5650295	HOISTING PLUG	4	----
5650300	O-RING	4	----

*ASTM F-480 Flush threads; additional threads are available.

2" PVC SCHEDULE 40

2" SCHEDULE 40 RISER			
PART #	LENGTH	TPI*	PIECES PER BOX
5801030	2.5'	2	7
5800005	5'	2	7
5800010	10'	2	7

2" SCHEDULE 40 SCREEN				
PART #	SLOT SIZE	LENGTH	TPI*	PIECES PER BOX
5951360	.006	2.5'	2	7
5950004	.006	5'	2	7
5950009	.006	10'	2	7
5951025	.010	2.5'	2	7
5950005	.010	5'	2	7
5950010	.010	10'	2	7
5951023	.020	2.5'	2	7
5950006	.020	5'	2	7
5950011	.020	10'	2	7

2" CAPS, PLUGS & O-RINGS			
PART #	DESCRIPTION	TPI*	PIECES PER BOX
5650075	FLAT FEMALE CAP	2	40
5650050	FEMALE POINT	2	40
5650080	FLAT MALE PLUG	2	40
5650045	MALE POINT	2	40
5700021	HOISTING PLUG	2	-----
5650305	O-RING	2	----

*ASTM F-480 Flush threads; additional threads are available.

2" PVC SCHEDULE 80

2" SCHEDULE 80 RISER			
PART #	LENGTH	TPI*	PIECES PER BOX
5800325	2.5'	2	7
5801012	5'	2	7
5801011	10'	2	7

2" SCHEDULE 80 SCREEN				
PART #	SLOT SIZE	LENGTH	TPI*	PIECES PER BOX
5951365	.010	2.5'	2	7
5951012	.010	5'	2	7
5951011	.010	10'	2	7
5951370	.020	2.5'	2	7
5951375	.020	5'	2	7
5951017	.020	10'	2	7

2" CAPS, PLUGS & O-RINGS			
PART #	DESCRIPTION	TPI*	PIECES PER BOX
5650083	FLAT FEMALE CAP	2	40
5651026	FEMALE POINT	2	40
5650082	FLAT MALE PLUG	2	40
5651020	MALE POINT	2	40
5700034	HOISTING PLUG	2	-----
5650310	O-RING	2	----

*ASTM F-480 Flush threads; additional threads are available.

2 1/2" PVC SCHEDULE 40

2 1/2" SCHEDULE 40 RISER			
PART #	LENGTH	TPI*	PIECES PER BOX
5800330	2.5'	2	4
5800335	5'	2	4
5800340	10'	2	4

2 1/2" SCHEDULE 40 SCREEN				
PART #	SLOT SIZE	LENGTH	TPI*	PIECES PER BOX
5951380	.010	2.5'	2	4
5950085	.010	5'	2	4
5950080	.010	10'	2	4
5951385	.020	2.5'	2	4
5951390	.020	5'	2	4
5951395	.020	10'	2	4

2 1/2" CAPS, PLUGS & O-RINGS			
PART #	DESCRIPTION	TPI*	PIECES PER BOX
5650095	FLAT FEMALE CAP	2	40
5650315	FEMALE POINT	2	40
5650320	FLAT MALE PLUG	2	40
5650325	MALE POINT	2	40
5650330	HOISTING PLUG	2	----
5650335	O-RING	2	----

*ASTM F-480 Flush threads; additional threads are available.

2 1/2" PVC SCHEDULE 80

2 1/2" SCHEDULE 80 RISER			
PART #	LENGTH	TPI*	PIECES PER BOX
5800345	2.5'	2	4
5800050	5'	2	4
5800045	10'	2	4

2 1/2" SCHEDULE 80 SCREEN				
PART #	SLOT SIZE	LENGTH	TPI*	PIECES PER BOX
1951400	.010	2.5'	2	4
5950075	.010	5'	2	4
5950070	.010	10'	2	4
1951405	.020	2.5'	2	4
1951410	.020	5'	2	4
5950206	.020	10'	2	4

2 1/2" CAPS, PLUGS & O-RINGS			
PART #	DESCRIPTION	TPI*	PIECES PER BOX
5650090	FLAT FEMALE CAP	2	40
5650340	FEMALE POINT	2	40
5650079	FLAT MALE PLUG	2	40
5650345	MALE POINT	2	40
5700020	HOISTING PLUG	2	----
5650350	O-RING	2	----

*ASTM F-480 Flush threads; additional threads are available.

3" PVC SCHEDULE 40

3" SCHEDULE 40 RISER			
PART #	LENGTH	TPI*	PIECES PER BOX
5800031	2.5'	2	3
5800022	5'	2	3
5800023	10'	2	3

3" SCHEDULE 40 SCREEN				
PART #	SLOT SIZE	LENGTH	TPI*	PIECES PER BOX
1951420	.010	2.5'	2	3
5950063	.010	5'	2	3
5950062	.010	10'	2	3
1951425	.020	2.5'	2	3
1951430	.020	5'	2	3
1951435	.020	10'	2	3

3" CAPS, PLUGS & O-RINGS			
PART #	DESCRIPTION	TPI*	PIECES PER BOX
5650033	FLAT FEMALE CAP	2	10
5650088	FEMALE POINT	2	10
5650048	FLAT MALE PLUG	2	10
5650047	MALE POINT	2	10
5650355	HOISTING PLUG	2	-----
5650360	O-RING	2	----

*ASTM F-480 Flush threads; additional threads are available.

3" PVC SCHEDULE 80

3" SCHEDULE 80 RISER			
PART #	LENGTH	TPI*	PIECES PER BOX
5800350	2.5'	2	3
5800355	5'	2	3
5800360	10'	2	3

3" SCHEDULE 80 SCREEN				
PART #	SLOT SIZE	LENGTH	TPI*	PIECES PER BOX
1951440	.010	2.5'	2	3
1951445	.010	5'	2	3
1951450	.010	10'	2	3
1951455	.020	2.5'	2	3
1951460	.020	5'	2	3
1951465	.020	10'	2	3

3" CAPS, PLUGS & O-RINGS			
PART #	DESCRIPTION	TPI*	PIECES PER BOX
5650365	FLAT FEMALE CAP	2	10
5650370	FEMALE POINT	2	10
5650375	FLAT MALE PLUG	2	10
5650380	MALE POINT	2	10
5650385	HOISTING PLUG	2	-----
5650390	O-RING	2	----

*ASTM F-480 Flush threads; additional threads are available.

4" PVC SCHEDULE 40

4" SCHEDULE 40 RISER			
PART #	LENGTH	TPI*	PIECES PER BOX
5800024	2.5'	2	2
5800020	5'	2	2
5800025	10'	2	2

4" SCHEDULE 40 SCREEN				
PART #	SLOT SIZE	LENGTH	TPI*	PIECES PER BOX
1951470	.006	2.5'	2	2
1951475	.006	5'	2	2
5951135	.006	10'	2	2
5950071	.010	2.5'	2	2
5950015	.010	5'	2	2
5950020	.010	10'	2	2
5950068	.020	2.5'	2	2
5950026	.020	5'	2	2
5950024	.020	10'	2	2

4" CAPS, PLUGS & O-RINGS			
PART #	DESCRIPTION	TPI*	PIECES PER BOX
5650035	FLAT FEMALE CAP	2	20
5650039	FEMALE POINT	2	20
5650030	FLAT MALE PLUG	2	20
5651025	MALE POINT	2	20
5700047	HOISTING PLUG	2	----
5650395	O-RING	2	----

*ASTM F-480 Flush threads; additional threads are available.

4" PVC SCHEDULE 80

4" SCHEDULE 80 RISER			
PART #	LENGTH	TPI*	PIECES PER BOX
5800365	2.5'	2	2
5800044	5'	2	2
5800036	10'	2	2

4" SCHEDULE 80 SCREEN				
PART #	SLOT SIZE	LENGTH	TPI*	PIECES PER BOX
1951480	.010	2.5'	2	2
5950038	.010	5'	2	2
1951485	.010	10'	2	2
5952300	.020	2.5'	2	2
5950125	.020	5'	2	2
5950115	.020	10'	2	2

4" CAPS, PLUGS & O-RINGS			
PART #	DESCRIPTION	TPI*	PIECES PER BOX
5650044	FLAT FEMALE CAP	2	20
5650037	FEMALE POINT	2	20
5650051	FLAT MALE PLUG	2	20
5650034	MALE POINT	2	20
5700026	HOISTING PLUG	2	----
5650400	O-RING	2	----

*ASTM F-480 Flush threads; additional threads are available.

5" PVC SCHEDULE 40

5" SCHEDULE 40 RISER			
PART #	LENGTH	TPI*	PIECES PER BOX
5800370	2.5'	2	1
5801062	5'	2	1
5801061	10'	2	1

5" SCHEDULE 40 SCREEN				
PART #	SLOT SIZE	LENGTH	TPI*	PIECES PER BOX
5951490	.010	2.5'	2	1
5951125	.010	5'	2	1
5951107	.010	10'	2	1
5951495	.020	2.5'	2	1
5951126	.020	5'	2	1
5951108	.020	10'	2	1

5" CAPS, PLUGS & O-RINGS			
PART #	DESCRIPTION	TPI*	PIECES PER BOX
5650057	FLAT FEMALE CAP	2	10
5651049	FLAT MALE PLUG	2	10
5650420	HOISTING PLUG	2	-----
5650425	O-RING	2	----

*ASTM F-480 Flush threads; additional threads are available.

5" PVC SCHEDULE 80

5" SCHEDULE 80 RISER			
PART #	LENGTH	TPI*	PIECES PER BOX
5800375	2.5'	2	1
5800380	5'	2	1
5800385	10'	2	1

5" SCHEDULE 80 SCREEN				
PART #	SLOT SIZE	LENGTH	TPI*	PIECES PER BOX
5951500	.010	2.5'	2	1
5951505	.010	5'	2	1
5951510	.010	10'	2	1
5951520	.020	2.5'	2	1
5951525	.020	5'	2	1
5951530	.020	10'	2	1

5" CAPS, PLUGS & O-RINGS			
PART #	DESCRIPTION	TPI*	PIECES PER BOX
5650430	FLAT FEMALE CAP	2	10
5650440	FLAT MALE PLUG	2	10
5650450	HOISTING PLUG	2	-----
5650455	O-RING	2	----

*ASTM F-480 Flush threads; additional threads are available.

6" PVC SCHEDULE 40

6" SCHEDULE 40 RISER			
PART #	LENGTH	TPI*	PIECES PER BOX
5800033	2.5'	2	1
5800034	5'	2	1
5800035	10'	2	1

6" SCHEDULE 40 SCREEN				
PART #	SLOT SIZE	LENGTH	TPI*	PIECES PER BOX
5951535	.006	2.5'	2	1
5952011	.006	5'	2	1
5950099	.006	10'	2	1
5951540	.010	2.5'	2	1
5950035	.010	5'	2	1
5950029	.010	10'	2	1
5951100	.020	2.5'	2	1
5950064	.020	5'	2	1
5950030	.020	10'	2	1

6" CAPS, PLUGS & O-RINGS			
PART #	DESCRIPTION	TPI*	PIECES PER BOX
5650085	FLAT FEMALE CAP	2	10
5650065	FLAT MALE PLUG	2	10
5650470	HOISTING PLUG	2	----
5650475	O-RING	2	----

*ASTM F-480 Flush threads; additional threads are available.

6" PVC SCHEDULE 80

6" SCHEDULE 80 RISER			
PART #	LENGTH	TPI*	PIECES PER BOX
5800390	2.5'	2	1
5800199	5'	2	1
5800200	10'	2	1

6" SCHEDULE 80 SCREEN				
PART #	SLOT SIZE	LENGTH	TPI*	PIECES PER BOX
5951545	.010	2.5'	2	1
5950220	.010	5'	2	1
5950211	.010	10'	2	1
5951550	.020	2.5'	2	1
5950215	.020	5'	2	1
5950210	.020	10'	2	1

6" CAPS, PLUGS & O-RINGS			
PART #	DESCRIPTION	TPI*	PIECES PER BOX
5650120	FLAT FEMALE CAP	2	10
5651017	FLAT MALE PLUG	2	10
5650490	HOISTING PLUG	2	----
5650495	O-RING	2	----

*ASTM F-480 Flush threads; additional threads are available.

8" PVC SCHEDULE 40

8" SCHEDULE 40 RISER			
PART #	SLOT SIZE	TPI*	PIECES PER BOX
5800395	2.5'	2	1
5801043	5'	2	1
5801040	10'	2	1

8" SCHEDULE 40 SCREEN				
PART #	SLOT SIZE	LENGTH	TPI*	PIECES PER BOX
5951555	.010	2.5'	2	1
5950090	.010	5'	2	1
5951560	.010	10'	2	1
5951565	.020	2.5'	2	1
5951570	.020	5'	2	1
5952013	.020	10'	2	1

8" CAPS, PLUGS & O-RINGS			
PART #	DESCRIPTION	TPI*	PIECES PER BOX
5650089	FLAT FEMALE CAP	2	1
5650032	FLAT MALE PLUG	2	1
5650510	HOISTING PLUG	2	-----
5650515	O-RING	2	----

*ASTM F-480 Flush threads; additional threads are available.

8" PVC SCHEDULE 80

8" SCHEDULE 80 RISER			
PART #	LENGTH	TPI*	PIECES PER BOX
5800400	2.5'	2	1
5801047	5'	2	1
5801046	10'	2	1

8" SCHEDULE 80 SCREEN				
PART #	SLOT SIZE	LENGTH	TPI*	PIECES PER BOX
5951575	.010	2.5'	2	1
5951580	.010	5'	2	1
5951585	.010	10'	2	1
5951590	.020	2.5'	2	1
5951044	.020	5'	2	1
5951043	.020	10'	2	1

8" CAPS, PLUGS & O-RINGS			
PART #	DESCRIPTION	TPI*	PIECES PER BOX
5650091	FLAT FEMALE CAP	2	1
5650525	FLAT MALE PLUG	2	1
5650535	HOISTING PLUG	2	-----
5650540	O-RING	2	----

*ASTM F-480 Flush threads; additional threads are available.

PVC ADAPTERS

Hole Products offers a wide range of adapters for use with PVC screens and risers.

Our PVC adapter offering includes the following options:

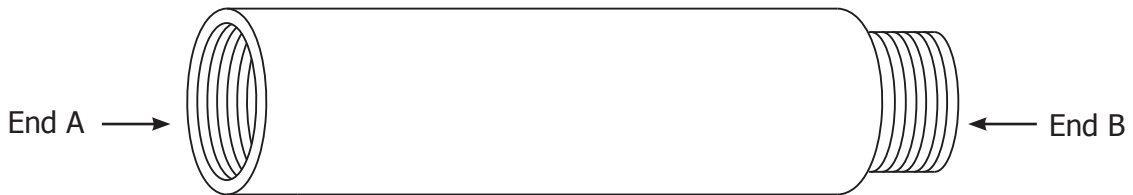
- Nominal Pipe Sizes: 1/2" to 18"
- Schedules: 40, 80, and 120 (SDRs are available on request)
- Threads: F-480 Flush (2, 4, and 8 TPI), Male / Female NPT

Refer to ordering guidelines below as a reference when ordering PVC adapters.

Please contact your Hole Products representative for additional information and ordering assistance.

PVC ADAPTER ORDERING REFERENCE GUIDE	
END A*	
Nominal Pipe Size:	
Schedule:	
Thread Type:	
Threads Per Inch:	
Slip End (Yes or No):	
Other Information:	
END B*	
Nominal Pipe Size:	
Schedule:	
Thread Type:	
Threads Per Inch:	
Slip End (Yes or No):	
Other Information:	

* Make selections for both "End A" and "End B".

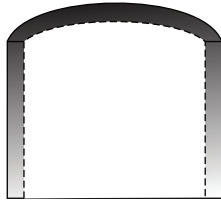


Designs may vary from photo.

SLIP CAPS AND PLUGS

Hole Products offers a complete range of PVC slip fittings including slip points, slip bottoms, slip caps, and slip couplings. Slip fittings are offered in sizes ranging from 1/2" – 18" in Schedule 40 and Schedule 80 (SDR fittings are available on request).

Please contact your Hole Products representative for additional information and assistance selecting slip caps and plugs.



SLIP CAPS (SCHEDULE 40)	
PART #	SIZE
5650054	1/2"
5651027	3/4"
5650043	1"
5650041	1 1/4"
5651002	1 1/2"
5650040	2"
5650092	2 1/2"
5650163	3"
5650038	4"
5650059	5"
5650060	6"
5650086	8"

PVC SLIP PLUGS (SCHEDULE 40)	
PART #	SIZE
5650545	3/4"
5650550	1"
5700032	1 1/4"
5650555	1 1/2"
5650098	2"
5650560	3"
5651001	4"
5650565	5"
5650570	6"
5650087	8"
5650096	10"
5650097	12"



U-PACK® SCREEN

U-Pack® Well Screens offer an economical solution for installing wells where a normal sand pack is not feasible. Typical applications include horizontal and angled wells, artesian wells, rock wells, jetted wells, open excavations, silty and fine grained soils, heaving sands, industrial filtration, and the relining of deteriorated wells.

- U-Pack® well screens consist of an outer PVC well screen and a centralized inner PVC well screen.
- U-Pack® well screens are shipped fully assembled and ready to pack. Since they are shipped empty, freight costs are reduced and ease of handling is increased. These units are filled with a clean filter media before, during, or after the well is drilled. A different filter media may be used for each hole depending on the well requirements.
- All materials are clean, ink free, and NSF approved. Additionally no glues or solvents are used in the manufacturing or assembly of these units.
- U-Pack® well screens are available from 1/2" to 6" diameters in a variety of lengths, slot sizes, and slot configurations. U-packs come standard with M x M FJT threads that conform to ASTM F-480.
- Flush Thread U-Pack® screens are compatible with our PVC flush thread casings. Units can be ordered with flush thread caps or female flush thread points for the bottom.

Please contact your Hole Products representative for additional information and assistance.



VEE-WIRE® SCREEN

Commonly used in shallow wells, Vee-Wire® screens have more open area per foot than other non-metallic screens, allowing more water to enter at lower velocities. Vee-Wire screens resist corrosion from salts and gases commonly found in either salt or fresh water and are resistant to acid treatments commonly used to clean wells.

- Vee-Wire® screens are furnished with Schedule 40 or 80 flush threads or plain ends for connecting to standard PVC fittings.
- Sizes range from 1.25" to 8", and screen slot size can be as small as 0.005 and up.

Please contact your Hole Products representative for additional information and ordering assistance.

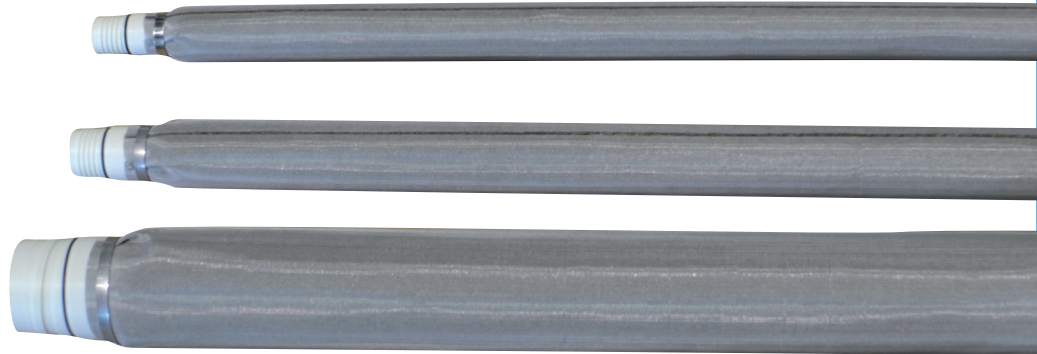


PREPACKED SCREENS

Prepacked well screens consist of a slotted PVC well screen, surrounded by a stainless steel mesh. #20/40 grade environmental sand is packed between the flush threaded PVC and the stainless steel mesh. This method of packing equalizes distribution of the sand around the well screen, thus reducing disturbance of the natural formation and installation time.

Prepacked screens are available in a variety of sizes for use with 1/2"- 2" PVC risers.

Please contact your Hole Products representative for additional information and ordering assistance.



SCHUMASOIL® SCREENS

SCHUMASOIL®, is a porous polyethylene well screen, designed to minimize flow resistance by providing 35% - 45% porosity uniformly distributed along the entire length of the well screen. Greater porosity, uniform pore distribution, and closely controlled pore size allow users to closely match the flow characteristics of the well screen to that of the formation.

Features:

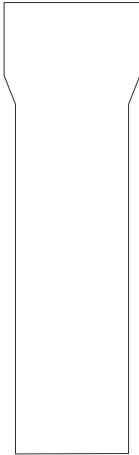
- Available to fit pipe sizes from 1" to 6"
- Highly porous with a homogeneous and uniform pore structure
- High permeability for water, soil vapor, and solvent phases
- High level of chemical resistance
- Light weight
- Low, long-term well operating costs
- Six different pore sizes offered to match soil formation characteristics
- Environmentally friendly



BELL END CASING

Hole Products offers bell end PVC casing in Schedules 40 and 80, and SDR's 17, 21, and 26. All PVC casings meet or exceed specification ASTM F-480 and are available in sizes ranging from 3/4" through 10" diameter and 20' lengths.

Please contact your Hole Products representative for availability of additional Bell End PVC casing.



BELLED END			
PART #	DIAMETER*	LENGTH	SCHEDULE
5900030	2"	20'	SCH40
5900035	2"	20'	SDR21
5900004	4"	20'	SCH40
5900005	4"	20'	SDR21
5900025	5"	20'	SCH40
5900008	5"	20'	SDR21
5900006	6"	20'	SCH40
5900011	6"	20'	SDR21
5900007	8"	20'	SCH40
5900010	8"	20'	SDR21

*Larger diameters are available.

PLAIN END CASING

Hole Products offers plain end PVC casing in Schedules 40 and 80 and SDR's 17, 21, and 26. All PVC casings meet or exceed specification ASTM F-480 and are available in sizes ranging from 3/4" through 10" diameter and 20' lengths.

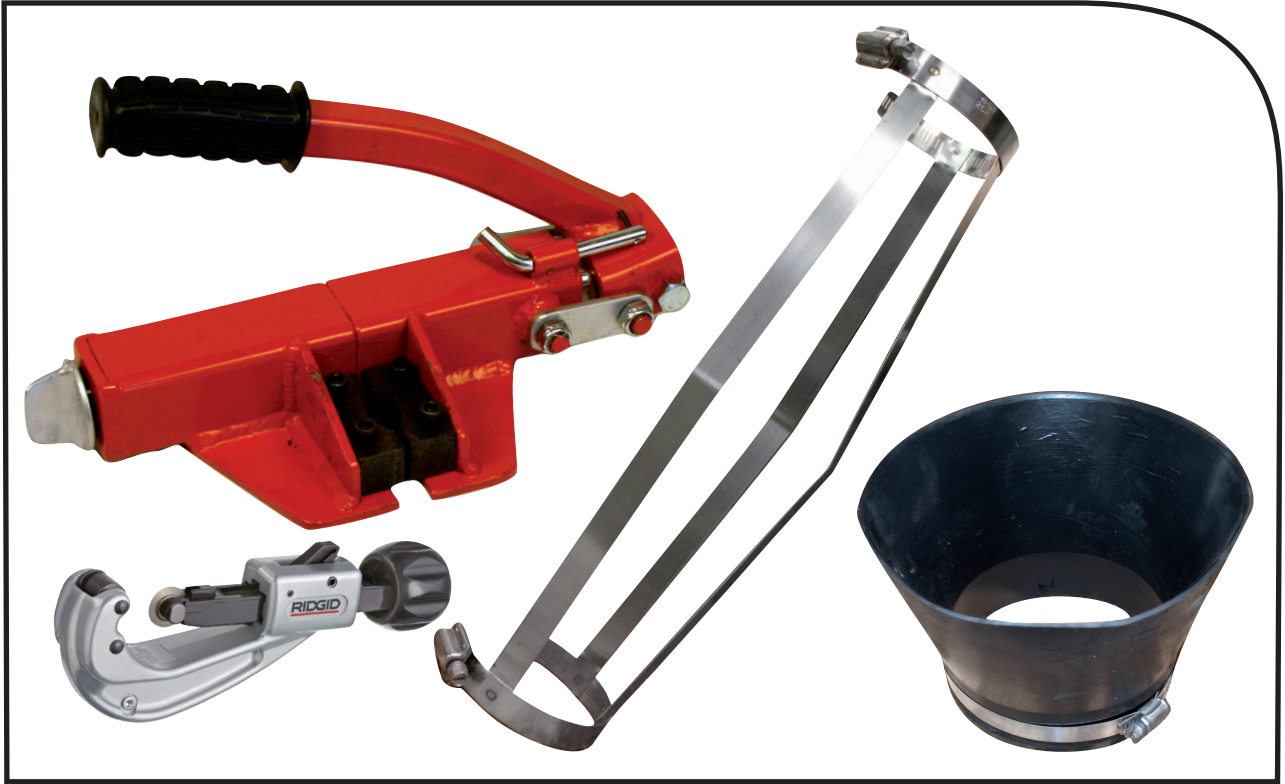
Please contact your Hole Products representative for availability of additional Plain End PVC casing.



PLAIN END			
PART #	DIAMETER*	LENGTH	SCHEDULE
5900040	2"	20'	SCH40
5900045	2"	20'	SDR21
5900050	4"	20'	SCH40
5900055	4"	20'	SDR21
5900060	5"	20'	SCH40
5900065	5"	20'	SDR21
5900015	6"	20'	SCH40
5900070	6"	20'	SDR21
5900075	8"	20'	SCH40
5900080	8"	20'	SDR21

*Larger diameters are available.

ACCESSORIES



Hole Products offers a wide range of PVC accessories including stainless steel centralizers, shale traps, surge blocks, well cleaning brushes and chemicals, filter socks, PVC cutters, pipe handling and hoisting tools, and much more.

PVC accessories listed in this catalog are representative of the industry's most common sizes and styles. Additional products are available on request.

Please contact your Hole Products representative for further assistance and availability of additional PVC accessories.

CENTRALIZERS

Hole Products' adjustable centralizers easily attach to screens and risers to prevent off center well placement. All centralizers are constructed of high quality, corrosion resistant stainless steel, and they will not contaminate the well. Centralizers are available to fit screen/casing ranging in size from 3/4" through 12" and adjust to fit boreholes up to 28".

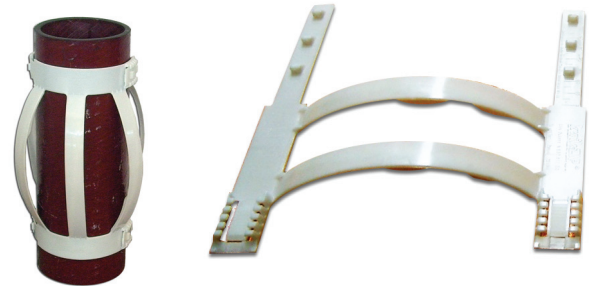
CENTRALIZERS		
PART #	SCREEN/CASING SIZES	HOLE DIAMETER
5600008	3/4"	Up to 11"
5600009	1"	Up to 11"
5600004	1 1/2"	Up to 12"
5600010	2"	Up to 12"
5600017	2 1/2"	Up to 13"
5600011	3"	Up to 13"
5600005	4"	Up to 12"
5600001	4"	Up to 16"
5600013	5"	Up to 17"
5600015	6"	Up to 20"
5600018	8"	Up to 24"
5600020	10"	Up to 24"
5600025	12"	Up to 26"
5600035	14"	Up to 28"



155 SERIES

- Utilized for Gravel Packed Screens, Water Well Casing, Monitor Wells, Drop Pipe, Pump Installation, Piles, Anchors and Sheathing for Ground Engineering.
- This model will centralize casing and sheathing diameters of 58mm (2.28 in) OD up to 180mm (7.09 in) OD.
- Its unique features include a flexible bow able to deflect to handle tight annulus settings.

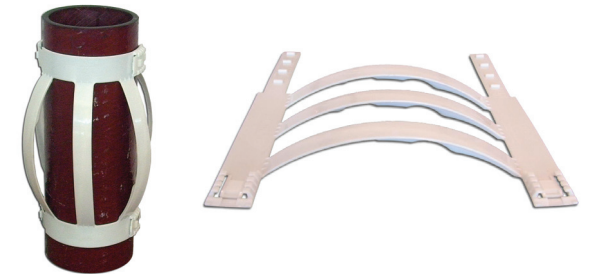
155 SERIES		
PART #	DESCRIPTION	HEIGHT OF BOW
5600027	155 HT-C	20MM/ (0.8")
5600065	155 HT-D	30MM/ (1.18")
5600050	155 HT-E	50MM/ (2")
5600052	155 SERIES SETTING TOOL KIT	REQUIRED FOR INSTALLATION



380 SERIES

- Utilized for Gravel Packed Screens, Casing, and Drop Pipe.
- This model will centralize casing diameters of 160mm (6.3 in) OD up to 760mm (29.9 in) OD.
- Its unique features include a flexible bow able to deflect to handle tight annulus settings.

380 SERIES		
PART #	DESCRIPTION	HEIGHT OF BOW
5600055	380 HT-D	30MM/ (1.18")
5600045	380 HT-E	50MM/ (2")
5600046	380 SERIES SETTING TOOL KIT	REQUIRED FOR INSTALLATION



GT SERIES

- Utilized for Rock Bolts, Soil Nails, Anchors, Small Dia Drop Pipe, Down Hole Camera and Geophysical Tools.
- This geotechnical centralizer will suit bar, pipe, micro pile and nail diameters from 18mm (0.70 in) OD up to 65mm (2.56 in) OD.
- Its unique features include a wide bow and a simple integrated "cable tie" method of assembly.

GT SERIES		
PART #	DESCRIPTION	HEIGHT OF BOW
5600036	GT 10-1	10MM/ (0.4")
5600029	GT 20-1	20MM/ (0.79")
5600038	GT 30-1	30MM/ (1.18")
5600031	GT 40-1	40MM/ (1.575")



HD SERIES

- Utilized for Trenchless and Cased Crossings, Slip Lining, Gravel Packed Well Screens, Pump Torque Arrestor, Water Well Casing, Coal Seam Methane Casing, Pump Riser/Submersible Pump Installation, and Piling.
- This model will centralize pipe and casing diameters of 110mm (4.33in) OD to greater than 1600mm (63in) OD.
- Its unique features include a curved bow spring with superior centralizing force.

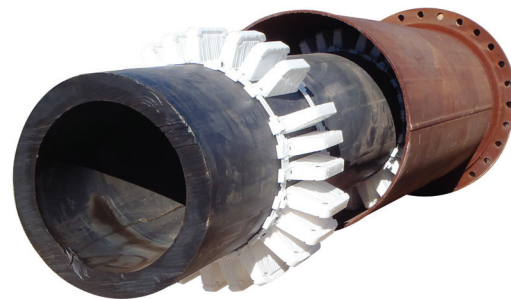
HD SERIES		
PART #	DESCRIPTION	HEIGHT OF BOW
5600044	HD 30	30MM/ (1.18")
5600032	HD 50	50MM/ (2")
5600047	HD 75	75MM/ (3")
5600040	HD 100	100MM/ (4")



HDX SERIES

- HDX Series for Medium to Heavy Weight Pipe in Cased Crossings
- Handles Steel, DICL, HDPE, Concrete and MSCL carrier pipes from 100mm (4") OD to 1600mm (63") OD and beyond.
- Deals with various annular clearances, both grouted and un-grouted, via multiple runner heights.
- Positions pipe within casing/host pipe for customized centering or restraining

HDX SERIES		
PART #	DESCRIPTION	HEIGHT OF BOW
5600048	HDX 38	38MM/ (1.5")
5600026	HDX 65	65MM/ (2.6")
5600037	HDX 90	90MM/ (3.6")
5600030	HDX 125	125MM/ (5.0")



SHALE TRAPS

Hole Products offers a variety of neoprene rubber shale traps for risers ranging in size from 2" – 12" and borehole sizes up to 20". Shale traps are offered in soft or hard rubber and come standard with a stainless steel clamp for attaching to the well riser.

Shale traps are designed to support a grout column above the producing zone to seal between the casing and the bore hole when grouting.

Please contact your Hole Products representative for additional information.

STANDARD SHALE TRAPS

STANDARD SHALE TRAPS		
PART #	RISER/ CASING SIZE	MAXIMUM BOREHOLE SIZE
7001070	2"	5"
7001051	4"	7"
7001040	6"	10"



SUPREME SHALE TRAPS

Supreme shale traps have a thicker wall section than standard shale traps.

SUPREME SHALE TRAPS		
PART #	RISER/ CASING SIZE	MAXIMUM BOREHOLE SIZE
7001075	2"	4 1/2"
7001080	2"	5"
7001061	2"	6 1/2"
7001065	3"	6"
7001090	4"	7"
7001045	4"	8"
7000195	4"	9 1/2"
7001095	5"	7"
7001050	5"	8"
7001100	5"	9"
7001105	6"	10 1/2"
7001042	8"	14"
7001110	10"	16 1/4"
7001046	12"	20"



SURGE BLOCKS

Hole Products offers a variety of sizes and styles of surge blocks. Surge blocks are designed to develop gravel packed wells by gently forcing water to flow through the screen. The in and out action helps provide for maximum water flow into the well by settling and setting the gravel pack.

PVC SURGE BLOCKS

PVC surge blocks are constructed of solid PVC and designed to match the applicable I.D. of Schedule 40 PVC. PVC surge blocks are internally threaded with female pipe threads.

PVC SURGE BLOCKS		
PART #	SIZE	CONNECTION
5700035	2"	3/4" NPT
5700036	2" REPLACEMENT SEALS - (5)	-----
5700145	2" REPLACEMENT KIT	-----
5700025	4"	1" NPT
5700048	4" REPLACEMENT SEAL - (5)	-----
5700029	4" REPLACEMENT KIT	-----
5700082	6"	2" NPT
5700140	6" REPLACEMENT SEAL - (5)	-----
5700028	6" REPLACEMENT KIT	-----



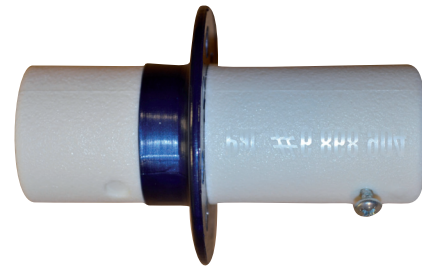
WELL DEVELOPER SURGE BLOCKS

Well Developer surge blocks utilize the surge block method and ball valve to effectively develop a well and purge clays and silt all in one step. These surge blocks are available in two series for use in wells ranging from 3/4" to 6".

ENVIRONMENTAL SERIES

The Environmental Series includes lightweight, inexpensive, disposable well developers that can be operated manually using flexible or rigid tubing (PVC, PEX, or polyethylene). The Environmental Series includes smaller well developers ranging from 3/4" through 2". These tools work best in wells with water levels to 30' and well depths to 100'.

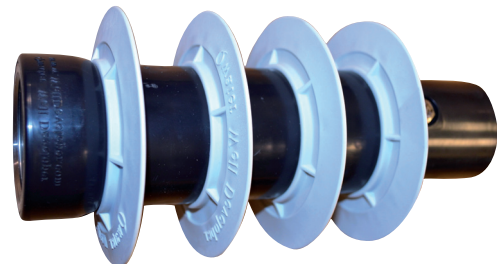
ENVIRONMENTAL SERIES	
PART #	SIZE
5700150	3/4"
5700037	1"
5700155	1 1/4"
5700160	1 1/2"
5700038	2"



PRODUCTION SERIES

The Production Series includes 4" and 6" reusable well developers. They are constructed of a tough ABS body, feature a molded 1 1/2" steel female NPT pipe fitting for attaching to a weighted wireline or drill pipe, and four tough, field replaceable polyurethane wipers. To convert to a less aggressive two wiper development tool, spacer rings are available to be used in place of two of the wipers.

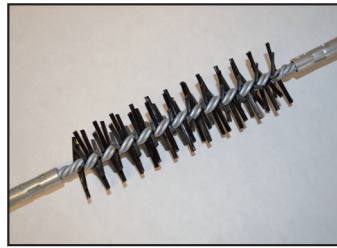
PRODUCTION SERIES	
PART #	SIZE
5700033	4"
5700163	5"
5700165	6"



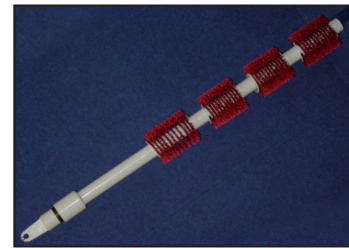
WELL CLEANING BRUSHES

Hole Products offers 2" well cleaning brushes featuring fixed brushes and 1/4" NPT threads for a pipe connection. The 4", 6", and 8" brushes are used in conjunction with a brush tool. The versatile design allows users to change the brush sizes to fit the screen or casing to be brushed and the ability to run the brush on a cable or pipe. Brushes are available to clean screen and casing ranging in sizes from 4" – 24".

WELL CLEANING BRUSHES*	
PART #	DESCRIPTION
5700071	2" - FIXED BRUSH
5700131	REPLACEABLE BRUSH TOOL
5700110	4" REPLACEABLE BRUSHES (4 REQ.)
5700132	6" REPLACEABLE BRUSHES (4 REQ.)
5700063	8" REPLACEABLE BRUSHES (4 REQ.)



2" Brush - Fixed Brush



Replaceable Brush Tool

*Other well cleaning brushes sizes and styles are available.

CLEANING DETERGENTS

Hole Products offers Liqui-nox® and Alconox® cleaning detergents for cleaning of sampling equipment, rigs, tooling, PPE, and more. Liqui-nox and Alconox are free rinsing and completely water soluble detergents.

CLEANING DETERGENTS	
PART #	DESCRIPTION
5610000	LIQUI-NOX® 1 QUART
5610002	LIQUI-NOX® 1 GALLON
5610001	ALCONOX® 4 LB BOX
3450035	ALCONOX® DISPENSER BOX (50 X 1/2 OZ)
3450036	ALCONOX® DISPENSER BOX (CASE OF 12 - 50 x 1/2 OZ)



FILTER SOCKS

Hole Products offers seamless, knitted filter socks for groundwater monitoring and remediation applications. Filter socks install quickly and easily over slotted well screens, providing additional filtration of unwanted soil particles.

Filter socks are offered in sizes from 1" – 8" and sold in 100' rolls.

FILTER SOCKS		
PART #	SIZE	LENGTH
5700000	1"	100'
5700001	2"	100'
5700002	4"	100'
5700003	6"	100'
5700170	8"	100'



PVC CUTTERS

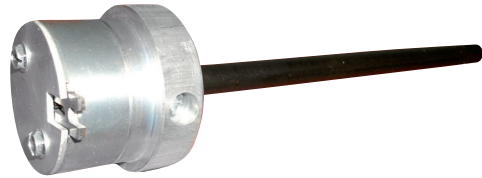
Hole Products offers a variety of internal, ratcheting action, and Ridgid® quick acting PVC cutters.

Please contact your Hole Products representative for selection assistance and availability of additional PVC cutters.

INTERNAL CUTTERS

Internal cutters are designed to make quick accurate cuts inside Schedule 40 and 80 PVC pipes ranging in size from 1 1/2" to 6" (nominal pipe size) using a supplied power source. Cutting depth is easily preset, and cuts are made in seconds. They are recommended for use with a 350-450 RPM drill. Replacement cutter blades are available on request.

INTERNAL CUTTERS	
PART #	PIPE SIZE
5700095	1 1/2" S40
5700005	2" S40
5700013	2" S80
5700006	4" S40
5700012	4" S80
5700007	6" S40
5700175	6" S80



RATCHETING CUTTERS

Ratcheting action cutters are available for cutting 1/8" to 2 3/8" PVC pipe. Ratcheting cutters save time, eliminate shavings, and work well in tight spaces or hard to reach spaces.

RATCHETING CUTTERS	
PART #	PIPE SIZE
5700008	1/8" TO 1 5/8"
5151029	1/2" TO 2 3/8"



QUICK ACTING CUTTERS

Ridgid® quick acting PVC cutters are available in various models for cutting PVC pipe ranging in sizes from 1/8" – 6 5/8". Quick acting cutters cut PVC quickly and easily and allow for quick, no tool cutting wheel changes.

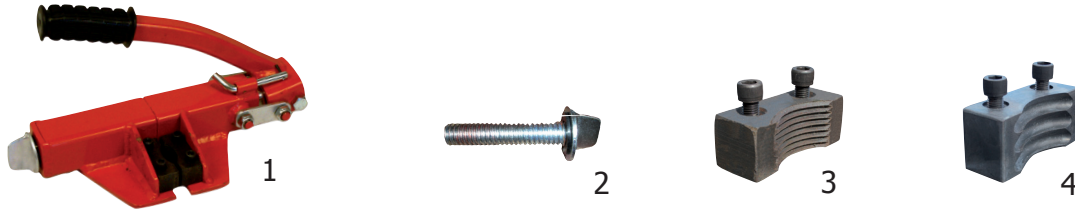
QUICK ACTING CUTTERS	
PART #	PIPE SIZE
5700015	1 7/8" - 4 1/2"
5700016	4" - 6 5/8"



KWIK KLAMPS™

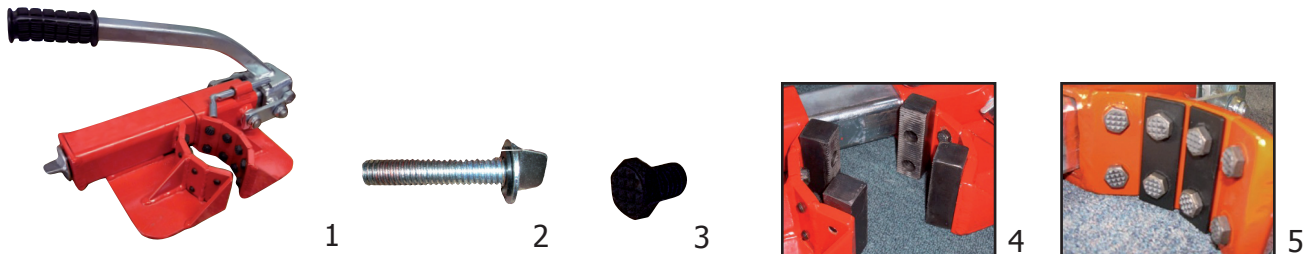
Kwik Klamps™ are a time saving and safe tool designed for clamping and holding pipe. They are lightweight, easy to use, and provide excellent holding capability. The adjustable jaws allow for use with multiple pipe sizes and boast have a safety pin to prevent accidental unclamping.

KWIK KLAMP 1		
ITEM	PART #	DESCRIPTION
1	4950005	COMPLETE CLAMP - 1" TO 2" PIPE SIZE
2	4950041	ADJUSTABLE SCREW W/ NYLON WASHER
3	4950012	JAW SET
4	4950017	SUPER JAW SET



KWIK KLAMP 2		
ITEM	PART #	DESCRIPTION
1	4950010	COMPLETE CLAMP - 2 1/2" TO 4" PIPE SIZE
2	4950045	ADJUSTABLE SCREW W/ NYLON WASHER
3	4950011	CARBIDE TIP GRIPPER - 3 /8" - 16" x 1/2"
4	4950019	JAW SET W/BOLTS (Specially designed for holding 2" and 2 1/2" pipe)*
5	4950050	SPACER

*Kwik Klamp 2 can also hold 2" pipe with an additional jaw set and 4 1/2" pipe with a set of spacers. (See fig. 4 & 5)



KWIK KLAMP 3		
ITEM	PART #	DESCRIPTION
1	4950006	COMPLETE CLAMP - 6" PVC PIPE ONLY*
2	4950070	ADJUSTABLE SCREW W/ NYLON WASHER
3	4950075	CARBIDE TIP GRIPPER - 3 /8" - 16" x 1"
4	4950080	CONVERSION KIT FOR 5" PIPE (10 Jaw pads & 20 Carbide Tipped Gripper Bolts)

*Kwik Klamp 3 can also hold 5" pipe with additional jaw set (conversion kit) (See fig. 4 & 5).



PVC CASING ELEVATORS

PVC casing elevators are a safe and efficient way to install bell end PVC well casing. All elevators are manufactured from 1/4" steel and come equipped with high quality, zinc plated chains. PVC elevators are sold in pairs; one to hold the casing, and one to lift. Additional elevators for pipe sizes from 1/2" – 16" are available on request.



PVC CASING ELEVATORS		
PART #	PIPE SIZE	RATING
5000070	2"	2,000 lbs.
5000073	3"	2,000 lbs.
5000075	4"	2,000 lbs.
5000078	6"	2,000 lbs.



PVC PIPE SPECIFICATIONS

PVC SCHEDULE 40 & 80		PVC SCHEDULE 40				PVC SCHEDULE 80			
Nom. Pipe Size	O.D.	Average I.D.	Min. Wall	Nom. Wt. / Ft.	Max. W.P. PSI*	Average I.D.	Min. Wall	Nom. Wt. / Ft.	Max. W.P. PSI*
1/8"	0.405"	0.249"	0.068"	0.051	810	.203"	.095"	0.058	1230
1/4"	0.540"	0.344"	0.088"	0.086	780	.288"	.119"	0.100	1130
3/8"	0.675"	0.473"	0.091"	0.115	620	.407"	.126"	0.138	920
1/2"	0.840"	0.608"	0.109"	0.161	600	.528"	.147"	0.202	850
3/4"	1.050"	0.804"	0.113"	0.214	480	.724"	.154"	0.273	690
1"	1.315"	1.033"	0.133"	0.315	450	.935"	.179"	0.402	630
1 1/4"	1.660"	1.364"	0.140"	0.426	370	1.256"	.191"	0.554	520
1 1/2"	1.900"	1.592"	0.145"	0.509	330	1.476"	.200"	0.673	470
2"	2.375"	2.049"	0.154"	0.682	280	1.913"	.218"	0.932	400
2 1/2"	2.875"	2.445"	0.203"	1.076	300	2.289"	.276"	1.419	420
3"	3.500"	3.042"	0.216"	1.409	260	2.864"	.300"	1.903	370
3 1/2"	4.000"	3.520"	0.226"	1.697	240	3.326"	.318"	2.322	350
4"	4.500"	3.998"	0.237"	2.006	220	3.786"	.337"	2.782	350
5"	5.563"	5.017"	0.258"	2.726	190	4.767"	.375"	3.867	320
6"	6.625"	6.031"	0.280"	3.535	180	5.709"	.432"	5.313	290
8"	8.625"	7.943"	0.322"	5.305	160	7.565"	.500"	8.058	280
10"	10.750"	9.976"	0.365"	7.532	140	9.492"	.593"	11.956	230
12"	12.750"	11.890"	0.406"	9.949	130	11.294"	.687"	16.437	230
14"	14.000"	13.073"	0.437"	12.462	130	12.410"	.750"	19.790	220
16"	16.000"	14.940"	0.500"	16.286	130	14.214"	.843"	25.430	220
18"	18.000"	16.809"	0.562"	20.587	130	16.014"	.937"	31.830	220
20"	20.000"	18.743"	0.593"	24.183	120	17.814"	1.031"	40.091	220
24"	24.000"	22.544"	0.687"	33.652	120	21.418"	1.218"	56.882	210

SDR 21 & 26		SDR 21 - W.P. 200 P.S.I. (Water @ 73.4°F.)			SDR 26 - W.P. 160 P.S.I. (Water @ 73.4°F.)		
Nom. Pipe Size	O.D.	Average I.D.	Min. Wall	Nom. Wt. / Ft.	Average I.D.	Min. Wall	Nom. Wt. / Ft.
1"	1.315	1.029"	0.133"	0.333	0.935"	0.179"	0.402
1 1/4"	1.660	1.360"	0.140"	0.450	1.256"	0.191"	0.554
1 1/2"	1.900	1.590"	0.145"	0.537	1.476"	0.200"	0.673
2"	2.375	2.047"	0.154"	0.720	1.913"	0.218"	0.932
2 1/2"	2.875	2.445"	0.203"	1.136	2.289"	0.276"	1.419
3"	3.500	3.042"	0.216"	1.488	2.864"	0.300"	1.903
3 1/2"	4.000	3.596"	0.190"	1.443	3.672"	0.154"	1.183
4"	4.500	3.998"	0.237"	2.118	3.326"	0.318"	2.322
5"	5.563	5.016"	0.258"	2.874	3.786"	0.337"	2.782
6"	6.625	6.031"	0.280"	3.733	4.767"	0.375"	3.867
8"	8.625	7.942"	0.322"	5.619	5.709"	0.432"	5.313

